

THE

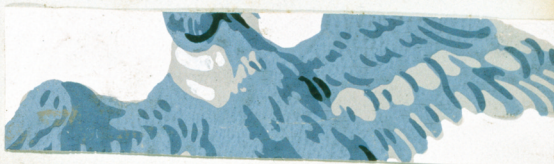
VICTORIAN

THE MAGAZINE OF THE VICTORIAN SOCIETY
NO 73 JULY 2023

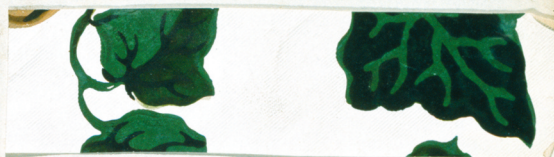
Librarian
11p



Mr Ward Malins's
bedroom, Little in bottom
beauty, see the Malins
angels in
10p



Holburn Chamber
10p



Lady Malins's
bedroom

19p French
10p



Span bedroom
1st floor

19p
10p

Lady Malins's
Sitting room



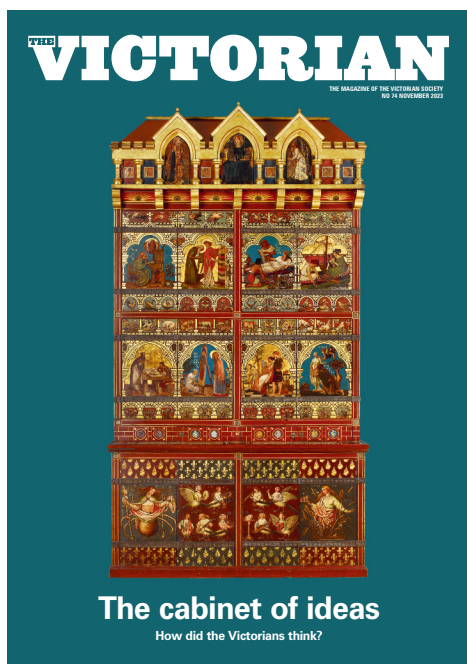
Interior decoration

Owen Jones, Cowtan, Cottier and Agnes Garrett
Plus the curious story of Victorian house names

2024 INFORMATION &
ADVERTISEMENT RATES

THE VICTORIAN

THE MAGAZINE OF THE VICTORIAN SOCIETY



THE VICTORIAN

magazine is published three times a year for The Victorian Society in March, July and November. There are currently 2,500 members, who consist of owners of Victorian property, architects, surveyors, town planners, designers, engineers and other conservation professionals in the public and private sector involved in the care, repair, restoration and conservation of historic buildings.

THE OPPORTUNITY For those who are promoting products and services used in the care, repair, conservation and restoration of Victorian buildings, **THE VICTORIAN** magazine provides an ideal medium. Readers require a wide range of materials and professional services including: ACCOUNTANTS • ARCHITECTS • ARCHITECTURAL METALWORK • BRICKWORK • CARPETS • CONSERVATORS • DOOR FURNITURE • ENVIRONMENTAL PLANNERS • ETCHED AND STAINED GLASS • FINE ART • FIREPLACES • GRATINGS • JOINERY • LEADED LIGHTS • PAINTS • PLASTERWORK • RAILINGS • RAINWATER GOODS • RESTORERS • ROOFING • ROOF TILES • RUGS • STATUARY • STONE CLEANING • STONEMASONS • STONWORK • SURVEYORS • WALL AND FLOOR TILES • WALLPAPERS • WINDOW SPECIALISTS • ETC

Regular features and articles include: House Notes, Buildings at Risk, Recently Listed Buildings, Casework, Book Reviews, Society News and Events.

These special sections provide vital information and advice about caring for and

living in Victorian and Edwardian buildings. They include problems relating to fixtures and fittings, wrought iron, ceramic tiles, wallpaper, carpets, furniture, stained glass and everything else in between.

NEWS



Vivat Victoria!

Even those members of the Society who had to give their wealth as the television drama *Victoria* great admiration onto Victoria must be pleased that it's been such a success. With an average of 7.7 million viewers per episode the series looks certain to be TV's most popular drama of 2016, so it's not surprising that a second series has already been commissioned.

The enthusiasm for the story of the woman dubbed by TV with *Victoria* as 'the most powerful woman in the world' is perfectly timed for the Queen's Diamond Jubilee, which has released the grant of an export licence for the original and rare portrait of the Queen in 1842. This gives British public collections and the end of December to decide if they want to bid for it. Because of the Queen's age, the portrait, which may have been owned with advice from Prince Albert, is displayed in *Victoria*'s

earliest portrait of Victoria, painted in 1842 and was worn by the Queen in 1840 for the first state opening of parliament after Albert's death. Visited at Christmas, the portrait has been acquired by an enormous foreign buyer following its sale by the Earl of Liverpool.

One of the happiest birthdays of the Queen's career, her state visit to France in 1855, is being celebrated at Compton Verney, Warwickshire, by an exhibition of watercolours recording the visit, loaned by the Royal Collection Trust until 11 December. These little-known paintings depict the ceremonial entrance of the Queen and Prince Albert into Paris, their apartments at Saint-Cloud, and the local entertainments arranged for them by Napoleon III and the Empress Eugénie. The exhibition, which will include watercolours made by the Queen herself on the visit, will travel to the Royal Albert Memorial Museum, Exeter, in February.

Queen Victoria's Army and Navy, 1840-1870 by **Philip Dunn** and **Francis Galton**, from the exhibition **Queen Victoria in Paris** at **Compton Verney**, Warwickshire, until 11 December. **£10.00**.

Chorlton Museum and Art Gallery, and the **Brown Museum, County Durham**, for more information, go to www.chorltonmuseum.co.uk.

Not Venice, but Lancaster
Henry Royal Collection Trust, 11
the Royal Albert Memorial Museum, Exeter, 11.06.16.

A former glass factory in Wallington Street, Lancaster has been listed Grade II thanks to an application made by the Society's Lancaster Group. Designed by an unknown architect for John W. Bowles, a glass manufacturer who bought the land in 1860, it is a striking monument to Bowles's enterprise, both in concept if use of red and blue bricks and Gothic top storey. Its unusually well preserved interior is regarded around an open courtyard, surrounded on all directions. From the 1860s the building was occupied by the respective bow and other manufacturers, G.F. Simons and John Pearson. Later, after a short period of use as a warehouse for the

**THE FINEST
TIMBER
WINDOWS
AND DOORS**

**THE SASH
WINDOW
WORKSHOP**



**NEW INSTALLATIONS,
UPGRADES, AND REPAIRS**

01344 868 668
www.sashwindow.com

WIND **MADE IN THE UK**

**Glass for
period windows**

THE LONDON CROWN GLASS COMPANY
71 Haverhill Road, Haverhill, Cambridgeshire CB9 7EE
Telephone: 01480 41377 Fax: 01480 41378
Email: londoncrown@btinternet.com
www.londoncrown.co.uk

Door & Window Fittings

INBRASS.CO.UK

Specialists in reproduction Georgian and Victorian architectural hardware including door knockers, handles, window lifts & fasteners, locks & latches, iron bolts and iron fire covers. Over 30 years experience supplying trade and public.

Unit 10, 11 & 12, 13, 14, 15, 16, 17, 18, 19, 20, 21, 22, 23, 24, 25, 26, 27, 28, 29, 30, 31, 32, 33, 34, 35, 36, 37, 38, 39, 40, 41, 42, 43, 44, 45, 46, 47, 48, 49, 50, 51, 52, 53, 54, 55, 56, 57, 58, 59, 60, 61, 62, 63, 64, 65, 66, 67, 68, 69, 70, 71, 72, 73, 74, 75, 76, 77, 78, 79, 80, 81, 82, 83, 84, 85, 86, 87, 88, 89, 90, 91, 92, 93, 94, 95, 96, 97, 98, 99, 100, 101, 102, 103, 104, 105, 106, 107, 108, 109, 110, 111, 112, 113, 114, 115, 116, 117, 118, 119, 120, 121, 122, 123, 124, 125, 126, 127, 128, 129, 130, 131, 132, 133, 134, 135, 136, 137, 138, 139, 140, 141, 142, 143, 144, 145, 146, 147, 148, 149, 150, 151, 152, 153, 154, 155, 156, 157, 158, 159, 160, 161, 162, 163, 164, 165, 166, 167, 168, 169, 170, 171, 172, 173, 174, 175, 176, 177, 178, 179, 180, 181, 182, 183, 184, 185, 186, 187, 188, 189, 190, 191, 192, 193, 194, 195, 196, 197, 198, 199, 200, 201, 202, 203, 204, 205, 206, 207, 208, 209, 210, 211, 212, 213, 214, 215, 216, 217, 218, 219, 220, 221, 222, 223, 224, 225, 226, 227, 228, 229, 230, 231, 232, 233, 234, 235, 236, 237, 238, 239, 240, 241, 242, 243, 244, 245, 246, 247, 248, 249, 250, 251, 252, 253, 254, 255, 256, 257, 258, 259, 260, 261, 262, 263, 264, 265, 266, 267, 268, 269, 270, 271, 272, 273, 274, 275, 276, 277, 278, 279, 280, 281, 282, 283, 284, 285, 286, 287, 288, 289, 290, 291, 292, 293, 294, 295, 296, 297, 298, 299, 300, 301, 302, 303, 304, 305, 306, 307, 308, 309, 310, 311, 312, 313, 314, 315, 316, 317, 318, 319, 320, 321, 322, 323, 324, 325, 326, 327, 328, 329, 330, 331, 332, 333, 334, 335, 336, 337, 338, 339, 340, 341, 342, 343, 344, 345, 346, 347, 348, 349, 350, 351, 352, 353, 354, 355, 356, 357, 358, 359, 360, 361, 362, 363, 364, 365, 366, 367, 368, 369, 370, 371, 372, 373, 374, 375, 376, 377, 378, 379, 380, 381, 382, 383, 384, 385, 386, 387, 388, 389, 390, 391, 392, 393, 394, 395, 396, 397, 398, 399, 400, 401, 402, 403, 404, 405, 406, 407, 408, 409, 410, 411, 412, 413, 414, 415, 416, 417, 418, 419, 420, 421, 422, 423, 424, 425, 426, 427, 428, 429, 430, 431, 432, 433, 434, 435, 436, 437, 438, 439, 440, 441, 442, 443, 444, 445, 446, 447, 448, 449, 450, 451, 452, 453, 454, 455, 456, 457, 458, 459, 460, 461, 462, 463, 464, 465, 466, 467, 468, 469, 470, 471, 472, 473, 474, 475, 476, 477, 478, 479, 480, 481, 482, 483, 484, 485, 486, 487, 488, 489, 490, 491, 492, 493, 494, 495, 496, 497, 498, 499, 500, 501, 502, 503, 504, 505, 506, 507, 508, 509, 510, 511, 512, 513, 514, 515, 516, 517, 518, 519, 520, 521, 522, 523, 524, 525, 526, 527, 528, 529, 530, 531, 532, 533, 534, 535, 536, 537, 538, 539, 540, 541, 542, 543, 544, 545, 546, 547, 548, 549, 550, 551, 552, 553, 554, 555, 556, 557, 558, 559, 560, 561, 562, 563, 564, 565, 566, 567, 568, 569, 570, 571, 572, 573, 574, 575, 576, 577, 578, 579, 580, 581, 582, 583, 584, 585, 586, 587, 588, 589, 590, 591, 592, 593, 594, 595, 596, 597, 598, 599, 600, 601, 602, 603, 604, 605, 606, 607, 608, 609, 610, 611, 612, 613, 614, 615, 616, 617, 618, 619, 620, 621, 622, 623, 624, 625, 626, 627, 628, 629, 630, 631, 632, 633, 634, 635, 636, 637, 638, 639, 640, 641, 642, 643, 644, 645, 646, 647, 648, 649, 650, 651, 652, 653, 654, 655, 656, 657, 658, 659, 660, 661, 662, 663, 664, 665, 666, 667, 668, 669, 670, 671, 672, 673, 674, 675, 676, 677, 678, 679, 680, 681, 682, 683, 684, 685, 686, 687, 688, 689, 690, 691, 692, 693, 694, 695, 696, 697, 698, 699, 700, 701, 702, 703, 704, 705, 706, 707, 708, 709, 710, 711, 712, 713, 714, 715, 716, 717, 718, 719, 720, 721, 722, 723, 724, 725, 726, 727, 728, 729, 730, 731, 732, 733, 734, 735, 736, 737, 738, 739, 740, 741, 742, 743, 744, 745, 746, 747, 748, 749, 750, 751, 752, 753, 754, 755, 756, 757, 758, 759, 760, 761, 762, 763, 764, 765, 766, 767, 768, 769, 770, 771, 772, 773, 774, 775, 776, 777, 778, 779, 780, 781, 782, 783, 784, 785, 786, 787, 788, 789, 790, 791, 792, 793, 794, 795, 796, 797, 798, 799, 800, 801, 802, 803, 804, 805, 806, 807, 808, 809, 810, 811, 812, 813, 814, 815, 816, 817, 818, 819, 820, 821, 822, 823, 824, 825, 826, 827, 828, 829, 830, 831, 832, 833, 834, 835, 836, 837, 838, 839, 840, 841, 842, 843, 844, 845, 846, 847, 848, 849, 850, 851, 852, 853, 854, 855, 856, 857, 858, 859, 860, 861, 862, 863, 864, 865, 866, 867, 868, 869, 870, 871, 872, 873, 874, 875, 876, 877, 878, 879, 880, 881, 882, 883, 884, 885, 886, 887, 888, 889, 890, 891, 892, 893, 894, 895, 896, 897, 898, 899, 900, 901, 902, 903, 904, 905, 906, 907, 908, 909, 910, 911, 912, 913, 914, 915, 916, 917, 918, 919, 920, 921, 922, 923, 924, 925, 926, 927, 928, 929, 930, 931, 932, 933, 934, 935, 936, 937, 938, 939, 940, 941, 942, 943, 944, 945, 946, 947, 948, 949, 950, 951, 952, 953, 954, 955, 956, 957, 958, 959, 960, 961, 962, 963, 964, 965, 966, 967, 968, 969, 970, 971, 972, 973, 974, 975, 976, 977, 978, 979, 980, 981, 982, 983, 984, 985, 986, 987, 988, 989, 990, 991, 992, 993, 994, 995, 996, 997, 998, 999, 1000.

THE VICTORIAN SOCIETY was founded in 1958 as the national pressure group fighting to protect Victorian and Edwardian buildings in England and Wales. John Betjeman and Nikolaus Pevsner were among its founder members. The Society is a registered charity supported mainly by subscriptions from its members and by grants from English Heritage and Cadw.

The Society provides a vital role in the fight to save Victorian and Edwardian buildings of special architectural merit from needless destruction or disfigurement. The Society, which is one of only seven

National Amenity Societies in the UK, employs architectural advisers to deal with thousands of consultations and case studies each year, and to represent the Society at public enquiries and church courts. It also lobbies for changes in the law regarding conservation of our built heritage.

By law The Victorian Society must be consulted over any proposal to demolish even part of a listed building.

The Society's publications are read by leading conservation professionals and are recognised as valuable sources of information on the period 1837-1914.

ADVERTISEMENT RATES

	DIMENSIONS			SINGLE INSERTION		SERIES OF THREE	
	height	x	width	mono	colour	mono	colour
Full page	270 mm	x	190 mm	£390	£528	£309	£422
Half page horizontal	132 mm	x	190 mm	£257	£350	£203	£278
Half page vertical	270 mm	x	92 mm	£257	£350	£204	£278
Quarter page	132 mm	x	92 mm	£180	£244	£144	£195
Eighth page	63 mm	x	92 mm	£95	£134	£78	£111
Full page bleed size	303 mm	x	216 mm				
Full page trim size	297 mm	x	210 mm				
Special positions	+ 10%						
Situations vacant	£18 per scc	column depth: 270mm column widths:		SINGLE: 44mm, DOUBLE: 92mm, THREE: 141mm, FOUR: 190mm			
Loose insert service	£303	sizes up to A5 (up to 6g)		£360	A4 sheet (up to 10g)		Other sizes and weights by arrangement

The Victorian Society reserves the right to refuse advertisements or advertisers at its own discretion.
A sample of all loose inserts should be supplied to the publishers for approval well in advance of the publication date.

All advertisement and loose insert rates exclude VAT.

Advertising agents' discount 10%.

Advertisement copy

High resolution (press ready) pdf with CMYK images and postscript fonts embedded.
An artwork and setting service is available but may be charged at cost.

Advertisement deadlines

ISSUE	MARCH	JULY	NOVEMBER
Publication date	1 March	28 June	1 November
Copy deadline	19 January	17 May	20 September

THE VICTORIAN ADVERTISEMENT DEPARTMENT

Maz Oakley, Email: maz@hall-mccartney.co.uk

Tel: 01462 896688 Fax: 01462 896677

Hall-McCartney Ltd, Heritage House, PO Box 21, Baldock, Hertfordshire SG7 5SH

www.hall-mccartney.co.uk